



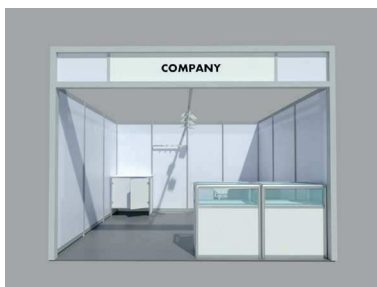
September 23rd - 25th 2022

Stand Construction Catalog

Stand Construction TYPE A / B / C / E
Prices & Equipment

Stand Construction BASIC / SMART / SMART PLUS
Prices & Equipment

TYPE A



Row stand



Corner stand



Peninsula stand

The price includes:

- construction made of Octanorm®-systeme elements
- walls 2500 mm high, white
- framed fascia panel with design elements at the open sides of the stand, with 1 lettering, construction height 3000 mm, area available for lettering W 2346 x H 420 mm
- lighting by track system spotlights, 1 spotlight per 2 m², made of Maxima-Light

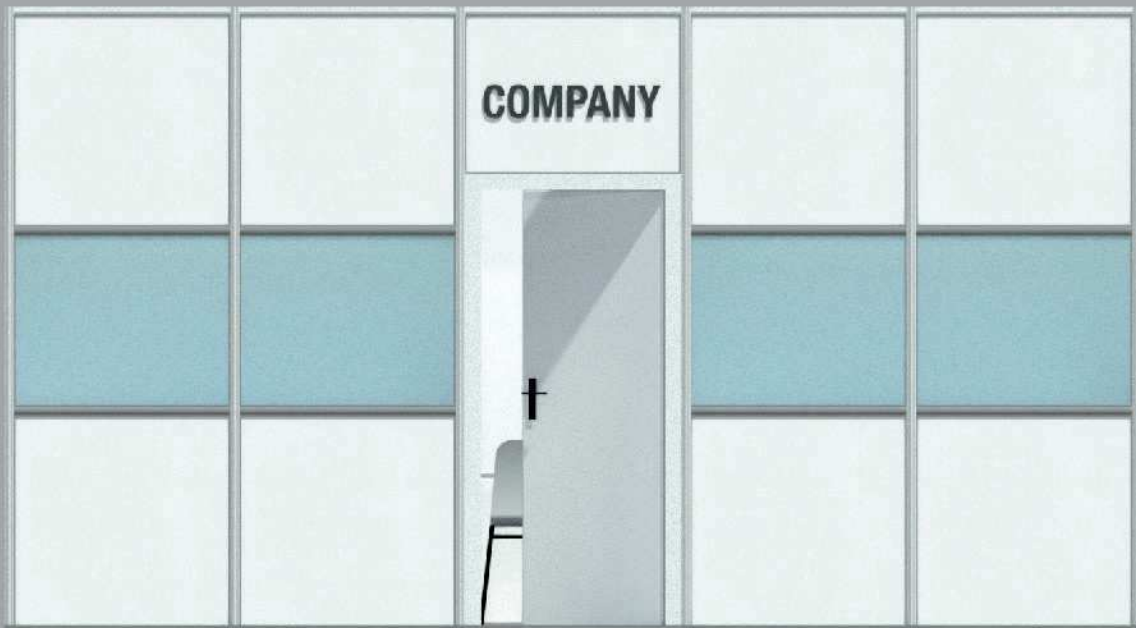
Included furniture:

- 1 coat rack
- 1 counter, W 1006 x H 1020 x D 512 mm, white
- 1 table W 1200 x H 720 x D 800 mm, white
- 4 upholstered shell chairs, anthracite
- 2 table showcases W 950 x H 1050 x D 470 mm, white

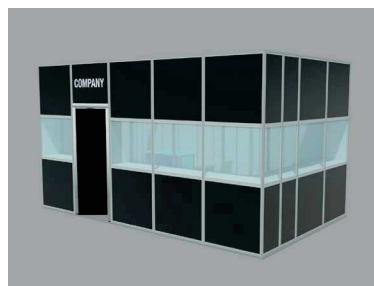
Stand sizes bigger than 17 m² will receive 1 table, 4 chairs and 1 table showcase additionally.

The individualization of the stand construction and additional equipment can be ordered for a surcharge in the online exhibition shop.

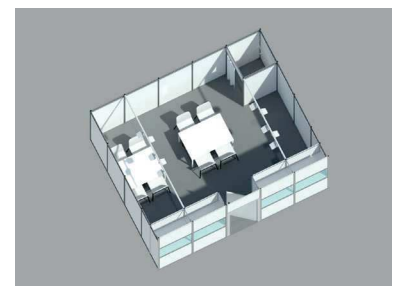
TYPE B



Row stand



Corner stand (design example)



Top view

The price includes:

- construction made of Octanorm®-systeme elements
- walls inside 2500 mm high, white
- front 2750 mm height with integrated showcases W 1000 x H 750 x D 500 mm and lockable door, inside of the showcases with sliding doors
- front colour can be chosen from 8 standard colours, incl. 1 lettering
- open ceiling
- cabin 1000 x 1000 mm with curtain grey and 1 coat rack
- lighting by track system spotlights, 1 spotlight per 2 m², 2 spotlights per showcase, incl. wiring, 1 power socket 230 V

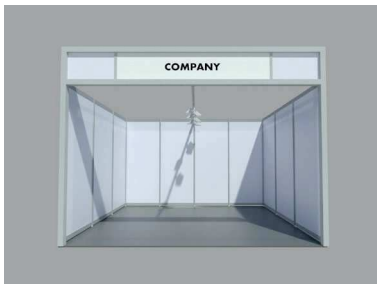
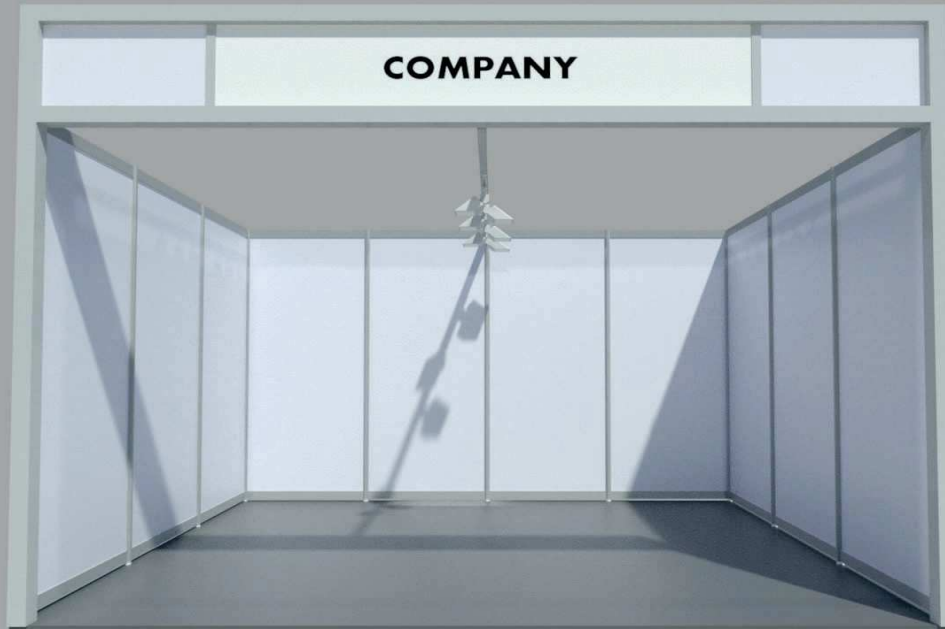
Included furniture:

- 1 table W 1200 x H 720 x D 800 mm, white
- 4 upholstered shell chairs, anthracite

Stand sizes bigger than 17 m² will receive 1 table 1200 x 800 mm and 4 chairs additionally.

The front can be made from coloured glass for an additional charge. The individualization of the stand construction and additional equipment can be ordered for a surcharge in the online exhibition shop.

TYPE C



Row stand



Corner stand

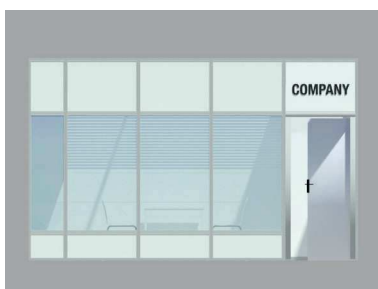
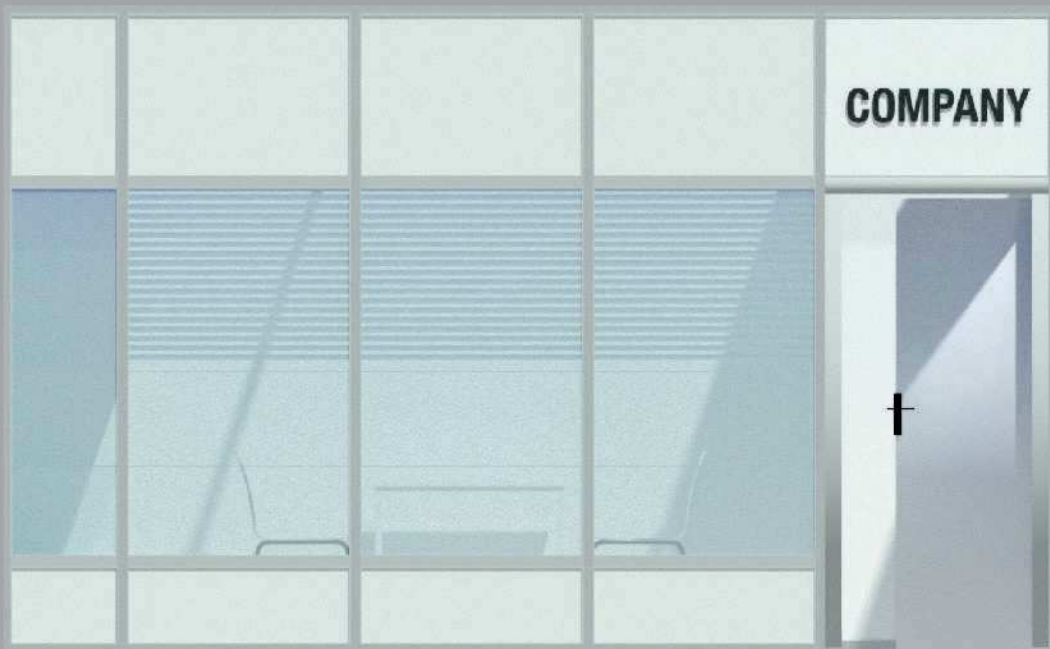


Peninsula stand

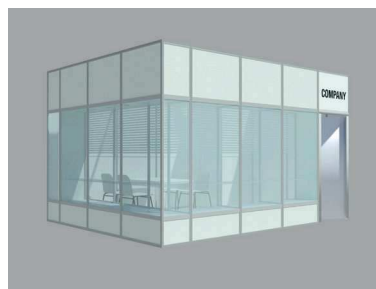
The price includes:

- construction made of Octanorm®-systeme elements
- walls 2500 mm high, white
- framed fascia panel with design elements at the open sides of the stand, with 1 lettering, construction height 3000 mm, area available for lettering W 2346 x H 420 mm
- open ceiling
- lighting by track system spotlights, 1 spotlight per 2 m², 1 power socket 230 V

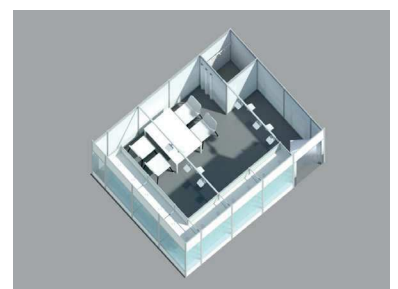
The individualization of the stand construction and additional equipment can be ordered for a surcharge in the online exhibition shop.



Row stand



Corner stand (design example)



Top view (design example)

The price includes:

- construction made of Octanorm®-systeme elements
- walls inside 2500 mm high, white
- front 2750 mm height with integrated showcases W 1000 x H 1600 x D 500 mm and lockable door, inside of the showcases with venetian blinds
- 2 glas shelves per showcase
- front colour can be chosen from 8 standard colours, incl. 1 lettering
- open ceiling
- cabin 1000 x 1000 mm with curtain grey and 1 coat rack
- lighting by track system spotlights, 1 spotlight per 2 m², 2 spotlights per showcase, incl. wiring, 1 power socket 230 V

Included furniture:

- 1 table W 1200 x H 720 x D 800 mm, white
- 4 upholstered shell chairs, anthracite

Stand sizes bigger than 17 m² will receive 1 table 1200 x 800 mm and 4 chairs additionally.

The front can be made from coloured glass for an additional charge. The individualization of the stand construction and additional equipment can be ordered for a surcharge in the online exhibition shop.

BASIC minimum size 18 m²



Row stand



Corner stand



Peninsula stand

The price includes:

- construction made of Maxima-Light design profiles 80/80
- filled with completely printed fabric banners, (design according to exhibitors specifications)*, construction height 3000 mm
- cabin 1 m² made of Maxima-Light design profiles with curtain, grey, filling with MDF white, also provided with digital print
- lighting with adjustable LED-spots mounted on track system on the truss-system, 1 spotlight per 4 m², 1 power socket 230 V

Included furniture:

- 3 showcases W 400 x H 1400 x D 400 mm, white
- 1 bridge table W 1200 x H 1100 x D 600 mm, white
- 4 barstools Q, white

The produced banners can be reused for following exhibitions, if the standsize is equal.

The individualization of the stand construction and additional equipment can be ordered for a surcharge in the online exhibition shop.

*Printing files will be delivered by the exhibitor.

SMART minimum size 16 m²



Row stand (design example)



Corner stand (design example)



Peninsula stand

The price includes:

- wall construction made of Mila-Wall, for back- and side-walls, construction height 3000 mm, incl. cabine 2000 x 1000 mm with lockable door
- 6 x wall lettering W 1000 x H 3000 mm with digital print*
- suspended front panel W 1980 x H 300 mm with lettering on Maxima-light beam system construction
- lighting with adjustable LED-spots mounted on track system, 1 spotlight per 4 m², 1 power socket 230 V

Included furniture:

- 4 showcases W 400 x H 1400 x D 400 mm, white
- 1 bridge table W 1200 x H 1100 x D 600 mm, white
- 1 Infopoint W 600 x H 1050 x D 600 mm, white
- 4 barstools Q, white

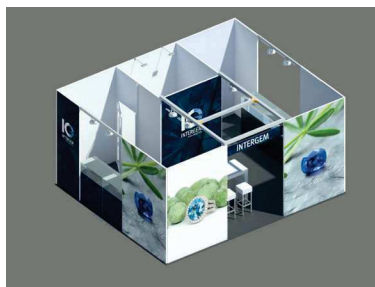
The individualization of the stand construction and additional equipment can be ordered for a surcharge in the online exhibition shop.

*Printing files will be delivered by the exhibitor.

SMART PLUS minimum size 30 m²



Peninsula stand (design example)



Peninsula stand (design example)



Top view

The price includes:

- wall construction made of Mila-Wall, for back- and side-walls, construction height 3000 mm, incl. cabine 2000 x 2000 mm with lockable door
- 12 x wall lettering W 1000 x H 3000 mm with digital print*
- 1 suspended front panel W 1980 x H 300 mm with lettering on Maxima-light beam system construction
- lighting with adjustable LED-spots mounted on track system, 1 spotlight per 4 m², 2 clamp-on floodlights in cabine, 1 power socket 230 V

Included furniture:

- 4 table showcases Newline W 950 x H 1050 x D 470 mm, white
- 1 bridge table W 1200 x H 1100 x D 600 mm, white
- 4 barstools Q, white

The individualization of the stand construction and additional equipment can be ordered for a surcharge in the online exhibition shop.

*Printing files will be delivered by the exhibitor.





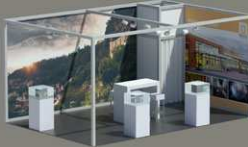


STAND RENTS OVERVIEW

Stand equipment on the next page

TYPE A	Rent for open system module stands, incl. stand area				
	less than 28 sqm		over 28 sqm		
	row stand	231 € sqm	row stand	215 € sqm	
	corner stand	238 € sqm	corner stand	220 € sqm	
	peninsula stand	244 € sqm	peninsula stand	226 € sqm	
TYPE B	Rent for closed system module stands, incl. stand area				
	less than 28 sqm		over 28 sqm		
	row stand	276 € sqm	row stand	260 € sqm	
	corner stand	285 € sqm	corner stand	266 € sqm	
	peninsula stand	291 € sqm	peninsula stand	273 € sqm	
TYPE C	Rent for open system module stands, incl. stand area				
	less than 28 sqm		over 28 sqm		
	row stand	215 € sqm	row stand	204 € sqm	
	corner stand	222 € sqm	corner stand	212 € sqm	
	peninsula stand	229 € sqm	peninsula stand	219 € sqm	
TYPE E	Rent for closed system module stands, incl. stand area				
	less than 28 sqm		over 28 sqm		
	row stand	285 € sqm	row stand	266 € sqm	
	corner stand	290 € sqm	corner stand	273 € sqm	
	peninsula stand	299 € sqm	peninsula stand	279 € sqm	
BASIC	Rent for open system module stands, incl. stand area				
	less than 28 sqm		over 28 sqm		
	row stand	321 € sqm	row stand	311 € sqm	
	corner stand	328 € sqm	corner stand	316 € sqm	
	peninsula stand	334 € sqm	peninsula stand	321 € sqm	
SMART	Rent for open system module stands, incl. stand area				
	less than 28 sqm		over 28 sqm		
	row stand	371 € sqm	row stand	358 € sqm	
	corner stand	380 € sqm	corner stand	363 € sqm	
	peninsula stand	386 € sqm	peninsula stand	371 € sqm	
SMART PLUS	Rent for open system module stands, incl. stand area				
	over 30 sqm				
	peninsula stand	426 € sqm			
	Rent for stand area (for self construction stand)				
	less than 28 sqm		over 28 sqm		
	row stand	161 € sqm	row stand	125 € sqm	
	corner stand	168 € sqm	corner stand	132 € sqm	
	peninsula stand	175 € sqm	peninsula stand	140 € sqm	

STAND EQUIPMENT OVERVIEW

Stand rents on the first page

TYPE A	<p>Standard furniture:</p> <ul style="list-style-type: none"> • 1 table • 4 chairs • 1 clothes rack • 2 showcases • 1 counter • 1 fascia lettering 	<p>Up from 17 sqm stand surface additional:</p> <ul style="list-style-type: none"> • 1 table • 4 chairs • 1 showcase 	
TYPE B	<p>Standard furniture:</p> <ul style="list-style-type: none"> • 1 table • 4 chairs • 1 clothes rack • 1 fascia lettering 	<p>Up from 17 sqm stand surface additional:</p> <ul style="list-style-type: none"> • 1 table • 4 chairs 	
TYPE C	<p>Standard furniture:</p> <ul style="list-style-type: none"> • no additional stand furniture included • 1 fascia lettering 		
TYPE E	<p>Standard furniture:</p> <ul style="list-style-type: none"> • 1 table • 4 chairs • 1 clothes rack • 1 fascia lettering 	<p>Up from 17 sqm stand surface additional:</p> <ul style="list-style-type: none"> • 1 table • 4 chairs 	
BASIC	<p>Standard furniture:</p> <ul style="list-style-type: none"> • 3 showcases • 1 bridge table • 4 bar stools 	<p>Standard graphics:</p> <ul style="list-style-type: none"> • fabric banner with digital print (reusable) • cabin filling with digital print 	
SMART	<p>Standard furniture:</p> <ul style="list-style-type: none"> • 4 showcases • 1 bridge table • 1 counter • 4 bar stools 	<p>Standard graphics:</p> <ul style="list-style-type: none"> • 6 wall lettering with digital print • 1 front panel with lettering 	
SMART PLUS	<p>Standard furniture:</p> <ul style="list-style-type: none"> • 4 table showcases • 1 bridge table • 4 bar stools 	<p>Standard graphics:</p> <ul style="list-style-type: none"> • 12 wall lettering with digital print • 1 front panel with lettering 	
	<p>Further equipment:</p> <ul style="list-style-type: none"> • Ceiling lights are mounted by using power rails TYP A, B, C, E: 1 spot per 2 sqm included BASIC, SMART, SMART PLUS: 1 spot per 4 sqm included • A power socket with 230 V and 2 KW is included. • Additional furniture can be ordered separately for an extra charge. 		